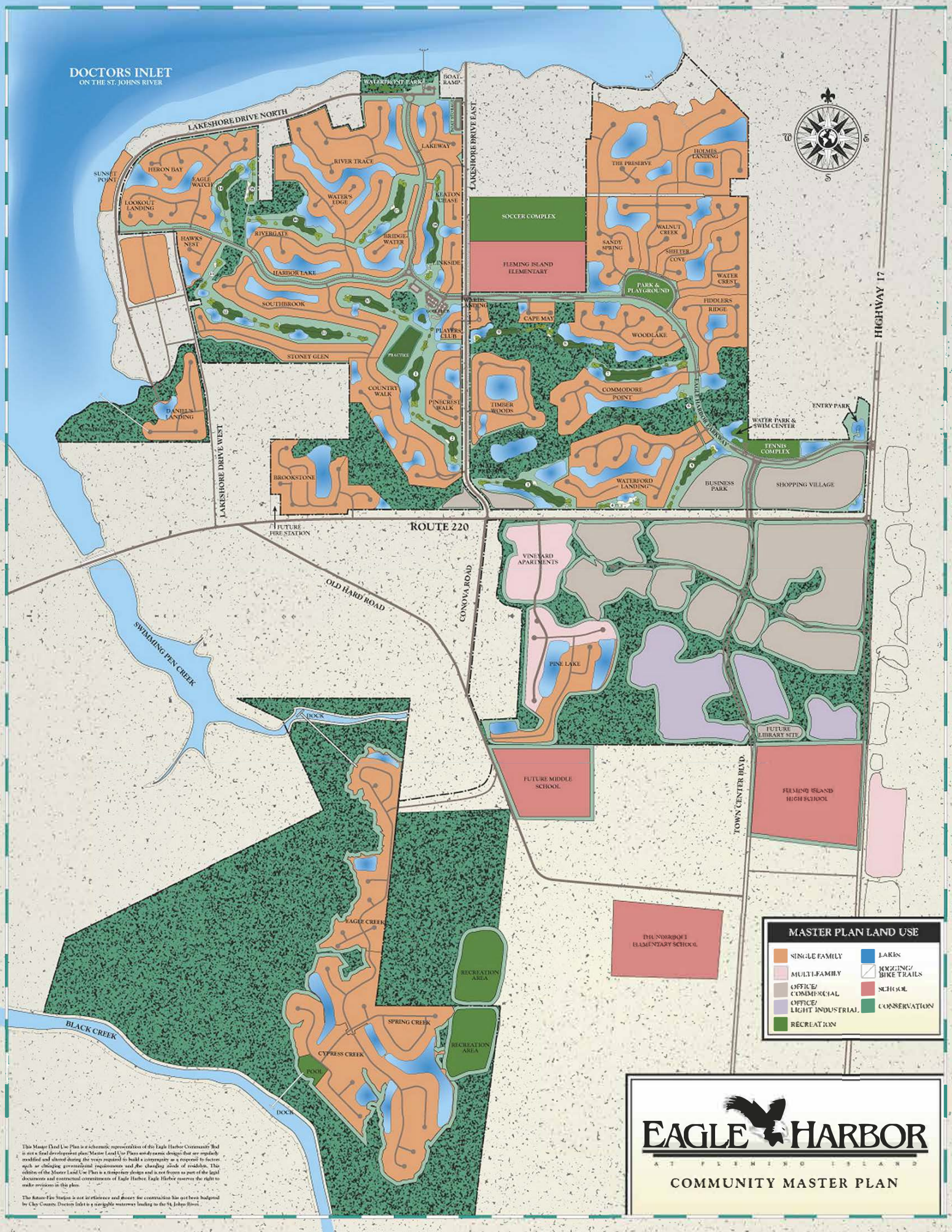


DOCTORS INLET
ON THE ST. JOHNS RIVER



MASTER PLAN LAND USE	
	SINGLE FAMILY
	MULTI-FAMILY
	LAKES
	RECREATION
	KENNELS/BIKE TRAILS
	SCHOOL
	OFFICE/COMMERCIAL
	CONSERVATION
	OFFICE/LIGHT INDUSTRIAL



EAGLE HARBOR

AT FLEMING ISLAND

COMMUNITY MASTER PLAN

This Master Land Use Plan is a schematic representation of the Eagle Harbor Community's but is not a final development plan. Master Land Use Plans are dynamic, designed to be updated, modified and altered during the years required to build a community in a response to factors such as changing governmental requirements and the changing needs of residents. The addition of the Master Land Use Plan is a temporary design and is not frozen as part of the legal documents and contractual covenants of Eagle Harbor. Eagle Harbor reserves the right to make revisions in this plan.

The Boat-Ramp Station is not an entrance and there is no construction has not been budgeted by City Council. Direction leads to a navigable waterway leading to the St. Johns River.